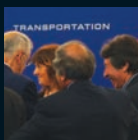
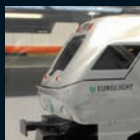


EXPO Ferroviaria 2012

5th International Railway Industry Exhibition

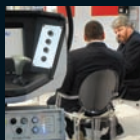
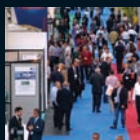


Lingotto Fiere
Turin, Italy
27-29 March 2012



Visitor Guide

The rail industry's meeting point in Italy



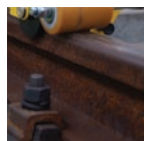
Italy's only event entirely dedicated to rail technology

EXPO Ferroviaria is the unmissable event for manufacturers and suppliers specialising in the rail sector. As the only Italian exhibition entirely dedicated to the latest technological innovations in the rail industry, EXPO Ferroviaria offers the unique opportunity to all attendees to discover the latest market trends, thanks to a rich programme of seminars and conferences. The event brings together industry leaders specialising in:

- Rolling stock
- Track and infrastructure
- Signalling, train control and communications
- Vehicle and infrastructure maintenance
- Fare collection systems
- Passenger technology information

Track Display Area

After proving highly successful at the previous edition, the Track Display Area is back at EXPO Ferroviaria 2012: sections of track laid in Hall 2 at Lingotto Fiere enable participating companies to display infrastructure vehicles, larger items of equipment and tools in an authentic setting.



Venue and Exhibition Opening Hours

Hall 1 and Hall 2, Lingotto Fiere, Turin, Italy

Tuesday 27 March 2012 10:00-17:00

Wednesday 28 March 2012 10:00-17:00

Thursday 29 March 2012 10:00-16:00

Admission

Pre-registration: FREE

Onsite registration: 15

Open to trade visitors only

Show Catalogue

The Show Catalogue will be available on site at 20

Exhibiting at EXPO Ferroviaria 2012

If you would like to exhibit, please contact Arianna Rossini urgently on:
Tel: +44 (0)1727 814 400

Organisers

MACKBROOKS
exhibitions

Romeland House, Romeland Hill,
St Albans, AL3 4ET, UK

Tel: +44 (0)1727 814 400

Email: expoferroviaria@mackbrooks.com



Register for FREE now on www.expoferroviaria.com

Conferences and Technical Visits

CIFI Conference



Hall 1, Sala Rossa

Tuesday 27 March 2012, 14:30 – 18:00

Wednesday 28 March 2012, 09:30 – 18:00

Thursday 29 March 2012, 09:30 – 12:30

After the successful event that took place alongside the last EXPO Ferroviaria in 2010, the Association of Italian Railway Engineers (CIFI) is organising two conferences entitled "Automated underground systems" and "How is rail transport changing? An Italian engineering and design at international level"

For more information please contact Ms Angela Di Cera

Tel: +39 06 488 21 29

in collaboration with



Technical Visits (free to attend)

Wednesday 28 March 2012



■ **Alstom Savigliano Plant.** The Alstom plant in Savigliano is one of the most important manufacturing centres for the Italian rail industry. The site specialises in the design and production of high speed tilting trains (Pendolino), very high speed trains (AGV), regional trains (Coradia) and suburban trains (X'trapolis).



■ **Turin Automated Metro.** The Turin metro is fully automated. There is no driver on board, and the trains are controlled by computer guidance systems from the Technical Centre in Collegno. The visit includes a guided tour of the Metro from Porta Nuova to Fermi, with a visit to the Technical Centre.

■ **Prototype for the VANAHEIM project.** The visit includes a demonstration of the automatic surveillance prototype made for the VANAHEIM project (EC FP7 funded). The visit will take place directly at the Turin Automated Metro's security room and show how innovative components for automatic monitoring of complex infrastructure, multi-sensors, with hundreds of cameras, microphones and network digital recorders can increase the effectiveness of existing public transport surveillance systems.

Thursday 29 March 2012



■ **Light Rail Workshop.** Turin's tram system comprises eight lines totalling some 200 km, with a fleet of around 200 vehicles, including 55 new generation trams. The visit includes a tour of the Workshop, where work on the design, planning and construction of points, crossings and other aspects of the network takes place.

■ **Porta Milano train refurbishment workshop and Piedmont Railway Museum.** The Porta Milano workshop is situated in the area of the former train station on the Turin – Ceres line. The facility is managed by GTT and specialises in the refurbishment and maintenance of train bogies and offers its services also to third parties.

How to register for the Technical Visits

The detailed programme and information on how to register will soon be featured on www.expoferroviaria.com

Register for FREE now on www.expoferroviaria.com

Exhibitor list as of 01/12/2011

A

A KAUFMANN AG (CH)
 ABB SPA (I)
 ACCOMANDITA TECNOLOGIE SPECIALI
 ENERGIA SPA (I)
 ACKSYS COMMUNICATIONS &
 SYSTEMS (F)
 ADOLF SCHNORR GMBH & CO KG (D)
 AEG LOW VOLTAGE ELETTRA SRL (I)
 ALHOF DI A HOFMANN SPA (I)
 ALPHA TRAINS BELGIUM NV (B)
 ALSTOM FERROVIARIA SPA (I)
 ALTRAN ITALIA SPA (I)
 AMRA SPA - CHAUVIN ARNOUX
 GROUP (I)
 ANSALDOBREDA SPA (I)
 ANSALDO STS (I)
 APAVE ITALIA CPM SRL (I)
 ARBOR ITALIA SRL (I)
 ARTHUR FLURY ITALIA SRL (I)
 ASSTRA ASSOCIAZIONE TRASPORTI (I)
 AUTRONIC STEUER UND
 REGELTECHNIK GMBH (D)

B

BALDWIN FILTERS NV (B)
 BARIX AG (CH)
 B & C PROJECT SRL (I)
 BERTOLOTI SPA (I)
 BLUE ENGINEERING SRL (I)
 BM SPA (I)
 BOFFETTI IMPIANTI SRL (I)
 BOMBARDIER (B)
 BREMSKERL REIBBELAGWERKE
 EMMERLING GMBH & CO KG (I)

C

CANAVERA & AUDI SRL (I)
 CASRAM RAIL SPA (I)
 CASSIDIAN (G)
 CDM SRL (I)
 CEA SPA (I)
 CEMBRE SPA (I)
 CERTIFER (F)
 CFI CONSORZIO FERROVIARIO
 ITALIANO (I)
 COET COSTRUZIONI
 ELETTROTECNICHE SRL (I)
 COFREN SRL (I)
 COMELETIC SNC (I)
 COMMEL SRL (I)
 GREENWOOD ENGINEERING A/S (DK)
 CORMACH SRL (I)

COSMEC SRL (I)
 CSI SPA (I)

D

D'ASCENZI PAVIMENTI SPA (I)
 DELTA SISTEMI SRL (I)
 DIGITAL MEDIA INDUSTRIES SRL (I)
 DIMAC RED SRL (I)
 DEUTA-WERKE GMBH (D)
 DMA SRL (I)
 DONELLI DIMAF SPA (I)
 DSPM INDUSTRIA SRL (I)
 DT VYHYBKARNA A STROJIRNA AS (CZ)

E

ECM SPA (I)
 EDILON\SEDRA GMBH (D)
 ELEKTROLINE AS (CZ)
 ELERON POWER SRL (I)
 ELETECH SRL (I)
 ELLECOSTA OTTONE (I)
 ELPACK SRL (I)
 EMANUEL SRL (I)
 EREDI GIUSEPPE MERCURI SPA (I)
 ERMES ELETTRONICA SRL (I)
 ESANASTRI SRL (I)
 ESSEN ITALIA SPA (I)
 EUROGAMMA SRL (I)
 EUROTECH SPA (I)
 EVAC GMBH (D)
 EXPONICA SRO (CZ)

F

FAIVELEY TRANSPORT ITALIA SPA (I)
 FAMATEC SPA (I)
 FASE SAS (I)
 FERROVIE DELLO STATO ITALIANE
 SPA (I)
 FILTREC SPA (I)
FITRE SPA (I)
 F.LLI AMADIO SPA (I)
 FOGTEC BRANDSCHUTZ GMBH &
 CO KG (D)
 FRAUSCHER SENSORTECHNIK
 GMBH (A)
 FRIEM SPA (I)

G

GAIA CONVERTER (F)
 GALLY SPA (I)
 GE RA SRL (I)
 GEATECH SPA (I)
 GEBR BODE GMBH & CO KG (D)

GECO SRL (I)
 GHH VALDUNES (F)
 GLEISFREI SRL (I)
 GLENAIR CONNECTORS ITALIA (I)
 GOMA ELETTRONICA SPA (I)
 GRUPPO LOCCIONI (I)
 GTT GRUPPO TORINESE TRASPORTI \
 INFRA.TO (I)

H

HARTING SPA (I)
 HASLERRAIL AG (CH)
 HELLERMANN TYTON SRL (I)
 HTC SRL (I)
 HUBER+SUHNER (CH)
 HÜBNER ITALIA SRL (I)
 HYPERTAC SA (F)
 HYPERTAC SPA (I)

I

IK INTERKLIMAT SPA (I)
 ILME SPA (I)
 IMG ULTRASUONI SRL (I)
 IN CO FIN SRL (I)
 INEKON GROUP AS (CZ)
 INFOTRONIC SPA (I)
 ING CATTANEO & C SRL (I)
 INTECS SPA (I)
 INTERPROIND (I)
 IPE LOCOMOTORI 2000 SRL (I)
 ISOIL INDUSTRIA SPA (I)
 ISOLGOMMA SRL (I)
 ITALIAN CABLE COMPANY SPA (I)

J

J LANFRANCO & CIE (F)
 JAMPEL SRL (I)
 JAQUET TECHNOLOGY GROUP (CH)

K

KDD KENNEL DIGITAL DISTRIBUTION
 SRL (I)
 KIEPE ELECTRIC SPA (I)
 KLIMAT-FER SPA (I)
 KLK ELECTRO MATERIALES SA (E)
 KNORR-BREMSE GMBH-DIVISION
 IFE (A)
 KNORR-BREMSE RAIL SYSTEMS ITALIA
 SRL (I)
 KROMISS BIS SP ZOO (PL)
 KST GMBH KAMERA & SYSTEM
 TECHNIK (D)

L

LA CELSIA DI E BACCHETTA & C SAS (I)
LAPI LABORATORIO PREVENZIONE
INCENDI SPA (I)
LCA BALLAURI SRL (I)
LEICA GEOSYSTEMS SPA (I)
LEMO ITALIA SRL (I)
LINOT DOTT STEFANO SRL (I)
LISTEC GMBH LINEAR SENSOR
TECHNIK (D)
LUKAS HYDRAULIK GMBH (D)

M

M TRADE SRL (I)
MAYSER GMBH (D)
MATISA SPA (I)
MARGARITELLI SPA DIVISIONE
FERROVIARIA (I)
MARINI IMPIANTI INDUSTRIALI SRL (I)
MAZZITECNOLOGY SRL (I)
MESAR SRL (I)
METALLURGICA BRESCIANA SPA (I)
METAWELL GMBH METAL SANDWICH
TECHNOLOGY (D)
MICROELETTRICA SCIENTIFICA SPA (I)
M M SRL (I)
MONT-ELE SRL (I)
MOXA EUROPE GMBH (D)
MP GAMMA SRL (I)
MTM POWER MESSTECHNIK
MELLENBACH GMBH (D)
MULTI-CONTACT (I)
MULTITEL ASBL (B)

N

NADELLA SRL (I)
NEXANS ITALIA SPA (I)
NKT CABLES GMBH (D)

O

OMV OFFICINE MECCANICHE
VALDOSTANE SRL (I)
OFFICINE STEFANUTO SRL (I)
OZKAN STEEL INC IND (TR)

P

PANTECNICA SPA (I)
PARKER HANNIFIN RACOR DIVISION
(USA)
PFISTERER SRL (I)
PHOENIX CONTACT SPA (I)
PHOENIX MECANO SRL (I)
PIERO BERSANINI SPA (I)

PLASSER & THEURER (A)
PLASSER ITALIANA (I)
PMA ITALIA SRL (I)
POLI SRL (I)
POSEICO SPA (I)
POJAZDY SZYNOWE PESA BYDGOSZCZ
SA (PL)
PRASE ENGINEERING SRL (I)
PRINATECNO SRL (I)
PRYSMIAN CAVI E SISTEMI ENERGIA
ITALIA SRL (I)

R

RAILTECH INTERNATIONAL SA (F)
RAILWAY GAZETTE INTERNATIONAL
(UK)
REALCABLE SRL (I)
REO INDUCTIVE COMPONENTS AG (D)
REVALCO SRL (I)
REX ARTICOLI TECNICI SA (CH)
RGM SPA (I)
RINA SERVICES SPA (I)
RIMEF SRL (I)
RITTAL SPA (I)
ROBEL BAHNBAUMASCHINEN GMBH
(D)
ROXTEC ITALIA SRL (I)
ROYALPLAST SRL (I)
ROLLON SRL (I)
RUGGEDCOM (CDN)

S

SCHLISS- UND SICHERUNGSSYSTEME
GMBH (D)
SCHUNK ITALIA SRL (I)
SCHWEIZER ELECTRONIC SRL (I)
SCHWIBAG AG (CH)
SECHERON SA (CH)
SELTA SPA (I)
SERVIZI FERROVIARI INTEGRATI SRL
CON SOCIO UNICO (I)
SIC (I)
SIECAB SRL (I)
SIEMENS SPA (I)
SIGMA-3 SRL (I)
SIMA SPA (I)
SIRTI SPA (I)
SITE SPA (I)
SOCEB SRL (I)
SPE SRL (I)
SPI MOTORI SRL (I)
SPII SPA (I)
SPOHN + BURKHARDT GMBH (D)

STA-FOR SRL (I)
STABILUS GMBH (D)
STAUBLI ITALIA SPA (I)
STE SRL (I)
STRAIL & STRAILASTIC - KRAIBURG
ELASTIK GMBH (D)
SUPERUTENSILI SRL (I)
SYSNET TELEMATICA SRL (I)

T

TEAFLEX SPA (I)
TECNEL SYSTEM SPA (I)
TECNIKABEL SRL (I)
TECO SRL (I)
TELEFIN SPA (I)
TELFER SRL (I)
TEM ELETTRONICA SRL (I)
THALES ITALIA SPA (I)
TRASFOR SA (CH)
TRIORAIL GMBH (D)
TZV GREDELJ DOO (CRO)

U

UBIFRANCE (F)
UMPI ELETTRONICA SRL (I)

V

VAE ITALIA SRL (I)
VAPOR EUROPE SRL (I)
VOGELSANG MASCHINENBAU GMBH
(D)
VOITH TURBO SRL (I)
VOITH TURBO LOKOMOTIVTECHNIK
GMBH & CO KG (D)
VOSSLOH FASTENING SYSTEMS
GMBH (D)
VOSSLOH LOCOMOTIVES GMBH (D)
VOSSLOH RAIL VEHICLES-VOSSLOH
ESPANA SA (E)

W

WEBASTO PRODUCT ITALY SPA (I)
WEISS TECHNIK ITALIA SRL (I)
WIX FILTERS (PL)

Z

ZEPHIR SPA (I)
ZWEIWEG INTERNATIONAL GMBH &
CO KG (D)

How to register for your visit to EXPO Ferroviaria 2012

FREE PRE-REGISTRATION

Register for free now at www.expoferroviaria.com

ONSITE REGISTRATION

There will be a 15 entrance fee for those that have not pre-registered.

VISITOR BADGES & REGISTRATION ENQUIRIES

For registration enquiries, please contact the EXPO Ferroviaria visitor registration team on Tel: +44 (0) 845 860 1482



Getting to EXPO Ferroviaria 2012



Porta Nuova Station is served by Trenitalia domestic trains and international services from France and Spain. From the train station the journey to Lingotto Fiere takes 20 minutes by tram (lines 1, 18 and 35) or 10 minutes by taxi. Information on train times can be found at www.trenitalia.com



Located in the south of Turin, the Lingotto Fiere exhibition centre is easily accessible from the 'Corso Unità d'Italia' exit from the city's ring road. Motorways from Milan, Venice and Trieste (A4), Bologna, Florence, Rome and Naples (A21 and A1) and Genoa (A21 and A26) all feed into the ring road. Parking for 5,500 cars is available at the exhibition centre.



Turin's Caselle airport is located 16 km north of the city and handles over 450 flights to 27 destinations each week. The journey from the airport to the exhibition centre takes approximately 30 minutes. A rail link from the airport operates to Turin (GTT Dora station). Bus services also operate from the airport to the city centre.



E-way.travel offers a wide variety of hotels at different prices. For further information and bookings, please contact Stefania Codecà:

Tel: +39 011 851629 Email: info@e-way.travel

With the endorsement of the Italian Ministry of Economic Development, Infrastructures and Transport

Show
Partners



Register for FREE now on www.expoferroviaria.com

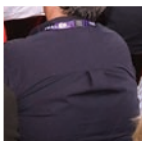
Not to be missed...

Exhibitor presentations

A lively seminar programme will be held during the 3 days of EXPO Ferroviaria.

The sessions will feature leading industry figures speaking on different subjects of topical significance and will be open to all visitors for free.

For more details visit www.expoferroviaria.com



International "Attilio Odero" Award

CFI – Italian Railway Consortium- (Group Multicon) has established the "Attilio Odero" International Award for Innovation and Technological Research in the field of railways and metro. The Award is open to Italian and International companies that have developed innovation and have introduced it in the industry or intend to do it. This tremendous opportunity will be officially presented at EXPO Ferroviaria 2012.



EXPO Ferroviaria networking reception

A reception will take place on Wednesday 28th March from 17:15 in the exhibition hall. The reception will be open to all exhibitors and visitors.

EXPO Ferroviaria 2012 will take place alongside INTERTunnel 2012, a key event in the tunnelling industry calendar. EXPO Ferroviaria visitors will gain free access to INTERTunnel



Media Partners



Register for FREE now on www.expoferroviaria.com